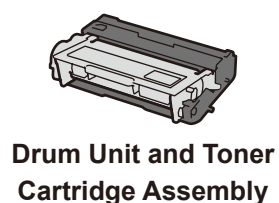
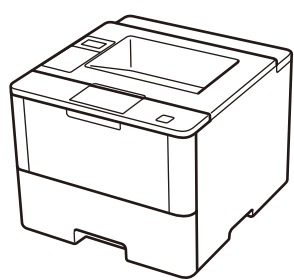


Unpack the machine and check the components



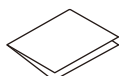
Drum Unit and Toner Cartridge Assembly



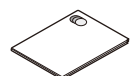
Installation CD-ROM



USB Interface Cable



Quick Setup Guide



Product Safety Guide

NOTE:

- The available connection interfaces vary depending on the model.
- Use the appropriate interface cable for the connection you want to use. (Network cable and Parallel cable are not standard accessories.)

USB cable

We recommend using a USB 2.0 cable (Type A/B) that is no more than 2 metres long.

Network cable

(For LJ4000DN / LJ5000DN)

Please purchase a straight-through Category 5 (or greater) twisted-pair cable for the machine.

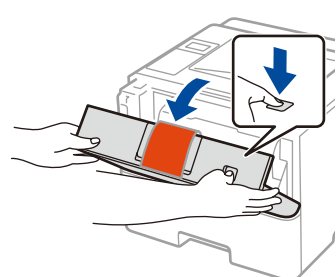
Parallel cable

(For LJ4000D)

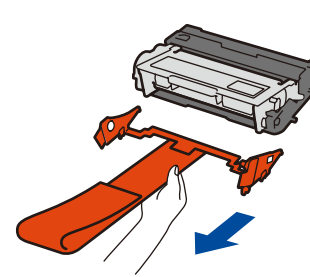
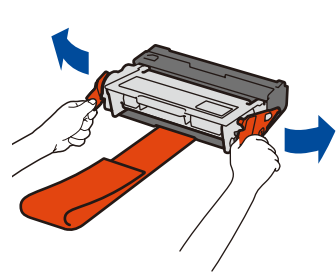
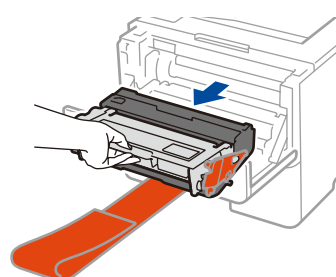
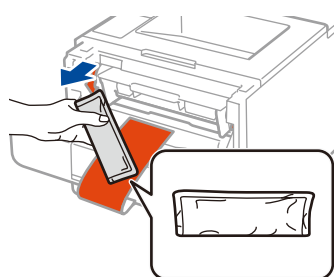
Please purchase the optional parallel cable (PC-5000) for the machine.

- The illustrations in this Quick Setup Guide show the LJ5000DN.

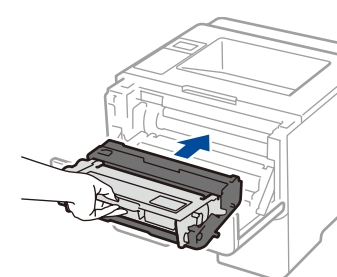
1 Remove the packing materials and install the drum unit and toner cartridge assembly



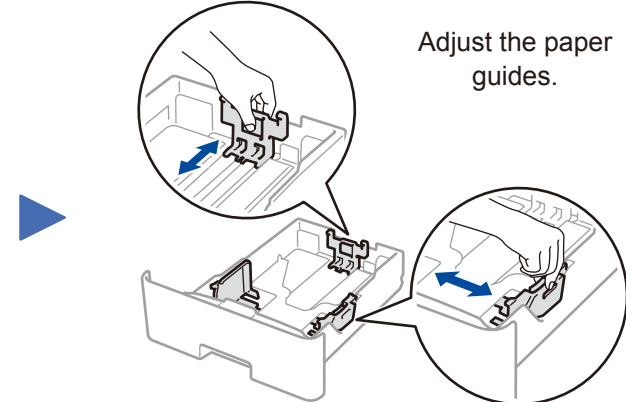
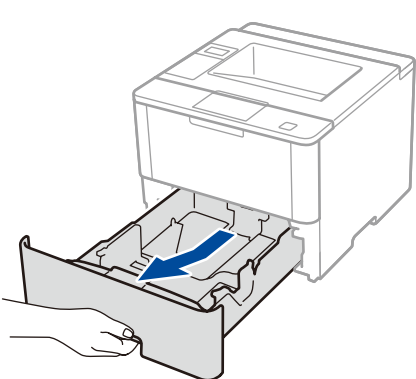
Discard the silica gel pack.



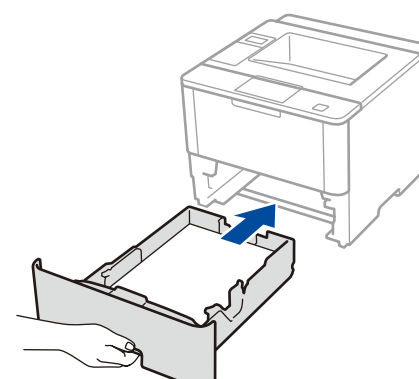
Remove the orange part.



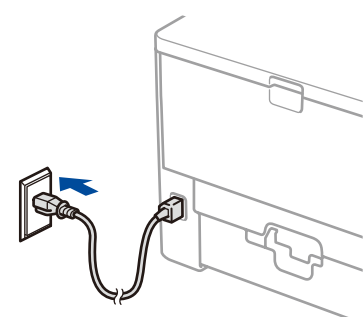
2 Load paper in the paper tray



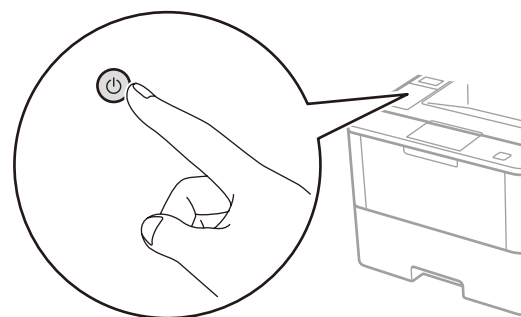
Adjust the paper guides.



3 Connect the power cord and turn the machine on



Back

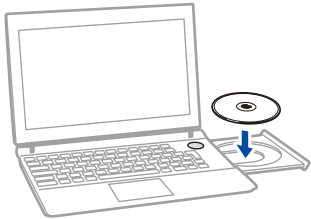


Front



Connect your machine and install software

Windows® computer with CD-ROM drive



NOTE:
If the Lenovo screen does not appear automatically, click **(Start) > Computer (My Computer)**.
(For Windows® 8: click the **(File Explorer)** icon on the taskbar, and then go to **Computer (This PC)**.)
Double-click the CD-ROM icon, and then double-click **start.exe**.

Macintosh/Windows® computer without CD-ROM drive


You can download the latest device driver for free from the Lenovo Support Website, enabling you to use your Lenovo machine as a printer.
Visit us at <http://www.lenovo.com>

■ For LJ4000D




■ For LJ4000DN / LJ5000DN

Choose your Connection Type:



© Wired Network Connection (Ethernet)



© Local Connection (USB)

Follow the on-screen instructions to continue installation.

Finish

NOTE:
If connection is unsuccessful, repeat this step.